



Project Info: *25 TREGO ROAD*

CMT Design and Construction are appointed by Trego Road Developments Ltd to carry out the construction of a thriving commercial and residential hub at 25 Trego Road. This project will be part of a huge creative communal hub located in Hackney Wick with various amenities and community spaces nearby. The project will comprise of 20,000 sq. ft commercial basement and ground floor spaces and public walkways connecting Trego Road to Allamouth Road. The project will also contain 52 residential flats across 5 floors comprising 1bhk, 2bhk as well as 3bhk units all finished to high standards. The project started in September 2021 and is expected to complete in spring 2023.

CMT Design and Construction have partnered with Maith Design Architects to develop the design and specifications of the whole project according to the planning conditions. The project has targeted BREEAM Very Good and will be complying with Considerate Constructors Scheme as well. Our site manager, Darius Januszko along with our project team is handling all day to day activities and coordinating with the different subcontractors on site and off site to deliver the project as efficiently as possible.

Contractor: [CMT Design & Construction](#)

Architects: [Maith Design](#)

Structural Engineers: [Shear Design Consulting](#)

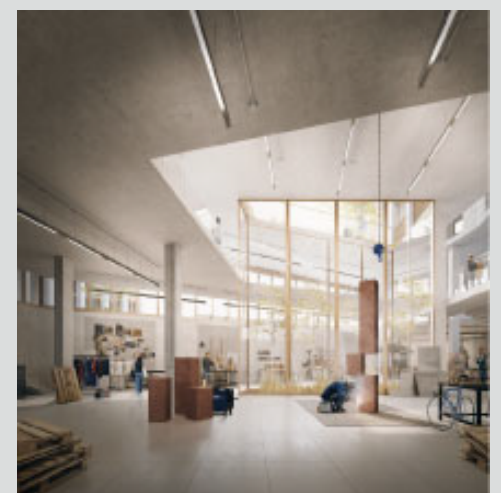
M&E Consultants: [Butler Consulting](#)



CMT Design and Construction Ltd has been in the construction industry for more than a decade delivering residential, commercial, hospitality, education, entertainment, and refurbishment projects all around London.

Contact Us

0 (20) 7840 0186 • www.cmtconstruction.co.uk • 4 Bedlam Mews, London SE11 6DF



Progress Update

With the piling complete, groundworks and foundation are currently ongoing. Trego Road saw the erection of Tower Crane on 21st of this month by Trident Lifting Solutions; the crane has a 29.7m tower height and a 40m jib length which will make the tasks of our site teams much easier and safer. We will start the basement slab pour, waterproofing and columns from basement to ground floor upcoming month.

